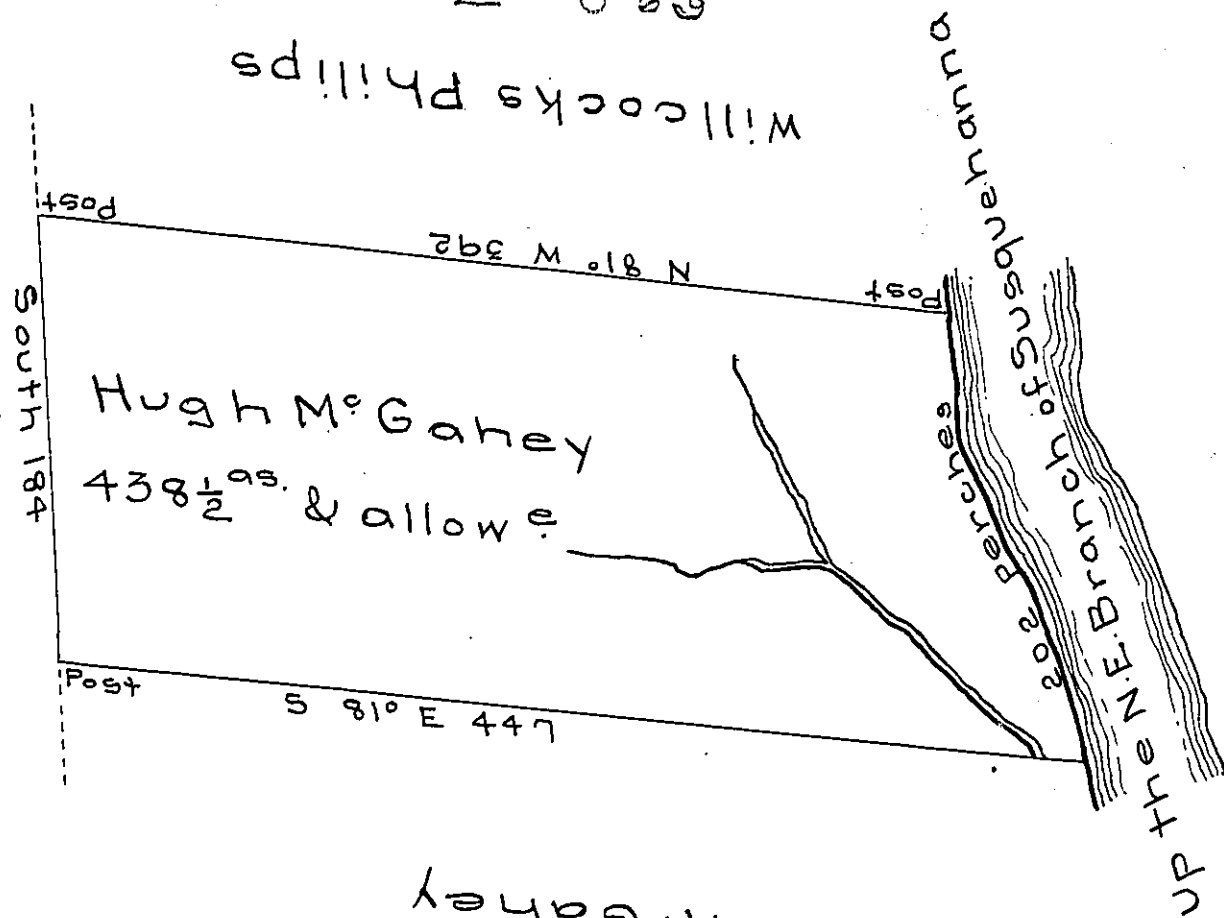


E 563

sd!!!yH sKoo!!!M

Yəmo7əo4T
M-52



Yəmo7əo4T
Sam! M. Gahey
Page 44

Draught of a tract of land called — situate on the N.E. Branch of the river Susq^a in the Great Bend joining land surveyed for Sam! M. Gahey & others in Northumb^d. County containing four hundred & thirty eight acres $\frac{1}{2}$ & allow^e of six p cent for roads & surveyed for Hugh M. Gahey the 4th day of June 1785 in pursuance of a warrant dated the 4th day of April 1785.

To John Lukens Esqr } by
Surv^r Gen! } Wm Gray D.S.

IN TESTIMONY that the above is a copy of the original remaining on file in the Department of Internal Affairs of Pennsylvania, made conformably to an Act of Assembly approved the 16th day of February, 1833, I have hereunto set my Hand and caused the Seal of said Department to be affixed at Harrisburg, this twenty-third day of November 1905

Geac B Brown
Secretary of Internal Affairs.